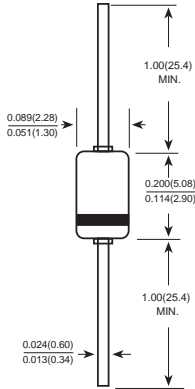


DB4

BIDIRECTIONAL TRIGGER DIODE

Reverse Voltage - 40Volts Power: 150mW

DO-35(GLASS)



Dimensions in inches and (millimeters)

FEATURES

- ◆ Small glass structure ensures high reliability
- ◆ VBO:35-45V version
- ◆ Low breakover current
- ◆ High temperature soldering guaranteed
250°C/10 seconds, 0.375" (9.5mm) lead length,
5 lbs. (2.3kg) tension

MECHANICAL DATA

Case: JEDEC DO-35 glass body

Terminals: Plated axial leads, solderable per MIL-STD-750,
Method 2026

Mounting Position: Any

Weight: 0.005 ounce, 0.14gram

MAXIMUM RATINGS AND CHARACTERISTICS

Ratings at 25°C ambient temperature unless otherwise specified.

	TEST CONDITION	SYMBOLS	VALUE			UNITS
			Min.	Typ.	Max.	
Breakover voltage *	C=22nF **	V_{BO}	35	40	45	VOLTS
Breakover voltage symmetry	C=22nF **	$ +V_{BO1}-I-V_{BO} $	-3		3	VOLTS
Dynamic breakover voltage *	(NOTE 1)	$ \Delta V \pm I $	5			VOLTS
Output voltage *	DIAGRAM2	V_o	5			VOLTS
Breakover current *	C=22nF **	I_{BO}			100	μA
Rise time *	DIAGRAM3	t_r		1.5		μS
Leakage current *	$V_R=0.5V_{BO}$	I_B			10	μA
Power dissipation on printed circuit	$T_A=65^\circ C$	P_d			150	mW
Repetitive peak on-state current	$t_p=20\mu s$ $f=100Hz$	I_{TRM}			2	A
Thermal Resistances from Junction to ambient		$R_{\theta JA}$			400	$^\circ C/W$
Thermal Resistances from Junction to lead		$R_{\theta JL}$			150	
Operating junction and storage temperature range		T_J, T_{STG}	-40		125	$^\circ C$

* :Electrical characteristic appoicaboe in forward and reverse directions.

** :Connected in parallel with the devices.

Note 1: I_{BO} from I_{BO} to 10mA

RATINGS AND CHARACTERISTIC CURVES DB4

DIAGRAM 1: CURRENT-VOLTAGE CHARACTERISTICS

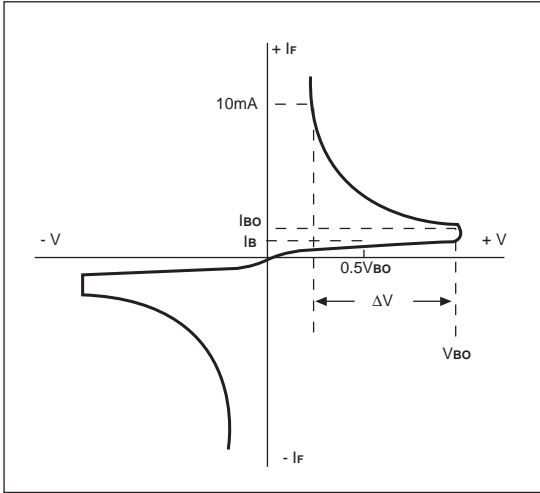


FIG. 1-POWER DISSIPATION VERSUS AMBIENT TEMPERATURE(MAXIMUM VALUES)

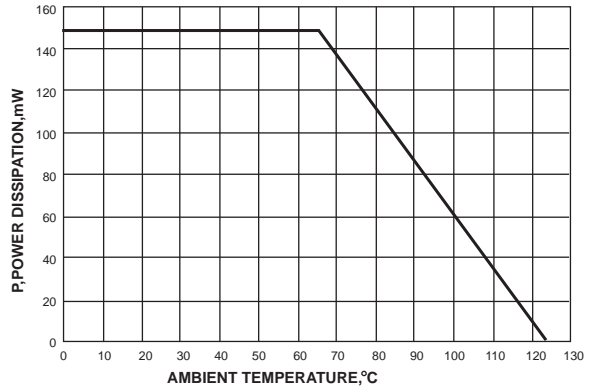


DIAGRAM 2: TEST CIRCUIT OUTPUT VOLTAGE

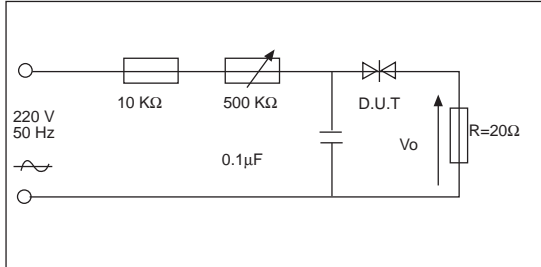


FIG. 2-PEAK PULSE CURRENT VERSUS PULSE DURATION (MAXIMUM VALUES)

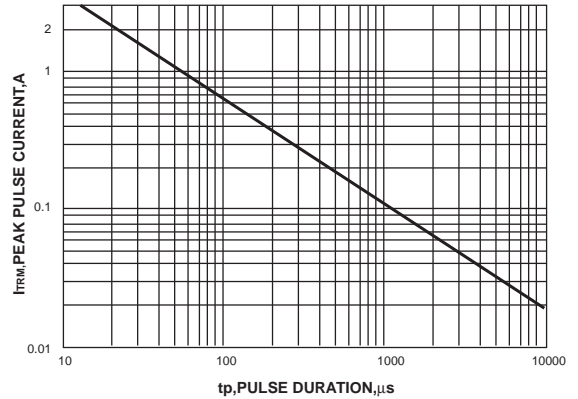


DIAGRAM 3: TEST CIRCUIT SEE DIAGRAM 2. ADJUST R FOR $I_p=0.5A$

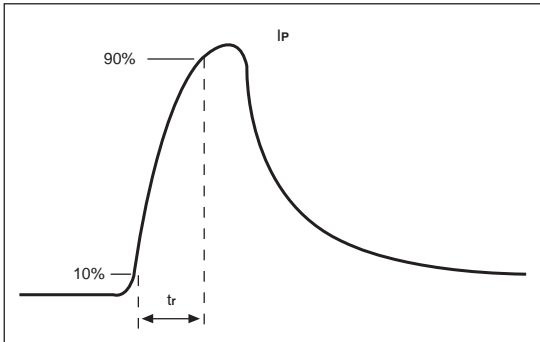


FIG. 3-RELATIVE VARIATION OF V_{Bo} VERSUS JUNCTION TEMPERATURE(TYPICAL VALUES)

