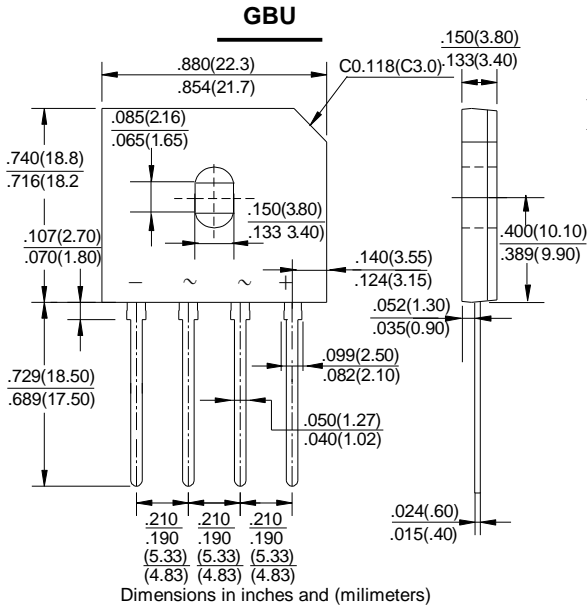


GBU20005 THRU GBU2010

GLASS PASSIVATED BRIDGE RECTIFIERS

Reverse Voltage - 50 to 1000 Volts Forward Current - 20.0 Amperes



FEATURES

- ◆ Glass passivated chip
- ◆ Low Reverse Leakage Current
- ◆ High surge current capability
- ◆ High temperature soldering guaranteed: 260°C±5°C/10 seconds (2.3kg.F)tension

MECHANICAL DATA

Case: Molded plastic
Lead: Solder plated
Mounting position: Any

MAXIMUM RATINGS AND ELECTRICAL CHARACTERISTICS

Rating at 25 °C ambient temperature unless otherwise specified. Single phase, half wave ,60Hz, resistive or inductive load.
For capacitive load derate current by 20%

CHARACTERISTICS	SYMBOL	GBU20005	GBU2001	GBU2002	GBU2004	GBU2006	GBU2008	GBU2010	UNIT
Maximum Recurrent Peak Reverse Voltage	V _{RRM}	50	100	200	400	600	800	1000	V
Maximum RMS Voltage	V _{RMS}	30	70	140	280	420	560	700	V
Maximum DC Blocking Voltage	V _{DC}	50	100	200	400	600	800	1000	V
Average Forward Output Rectified Current	I _O	20.0							A
Peak Forward Surge Current 50HZ sine wave,1 cycle Super Imposed on Rated Load (JEDEC Method)	I _{FSM}	240							A
Maximum Forward Voltage at 10.0 A DC	V _F	1.1							V
Maximum DC Reverse Current @ T _J =25°C at Rated DC Blocking Voltage @ T _J =125°C	I _R	10 500							μA
I ² t Rating for Fusing(t<8.3ms)	I ² t	239							A ² s
I ² t Rating for Fusing(t<10 ms)		338							
Typical Thermal Resistance (Note1)	R _{θJA}	22							°C/W
	R _{θJC}	1.8							
Typical junction capacitance (Note2)	C _J	70.0							pF
Operating Temperature Range	T _J	-55 to +150							°C
Storage Temperature Range	T _{STG}	-55 to +150							°C

NOTES: 1.Thermal resistance from junction to ambient at 0.375" (9.5mm)lead length,P.C.B. mounted
2.Measured at 1MHz and applied reverse voltage of 4.0V D.C.

RATINGS AND CHARACTERISTIC CURVES GBU20005 THRU GBU2010

FIG.1-FORWARD CURRENT DERATING CURVE

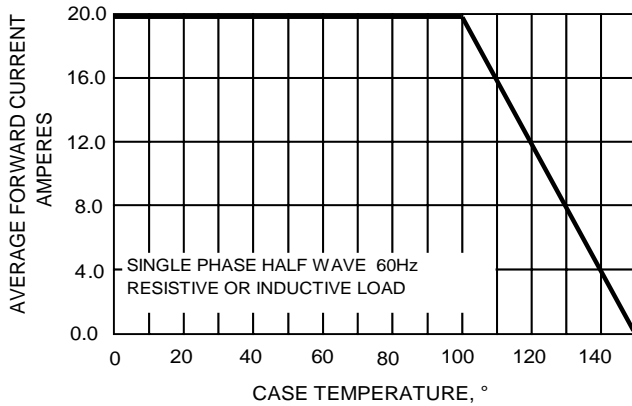


FIG.2-MAXIMUM NON-REPETITIVE SURGE CURRENT

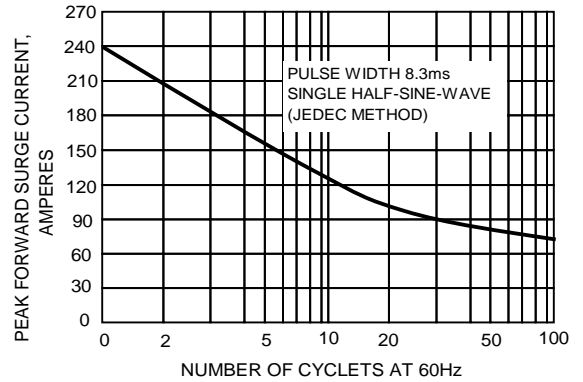


FIG.3-TYPICAL JUNCTION CAPACITANCE

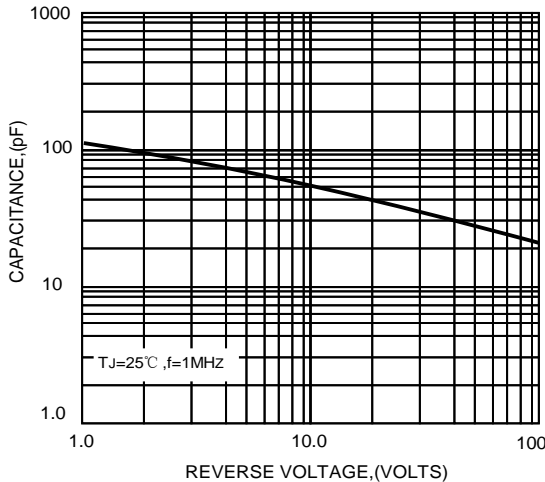


FIG.4-TYPICAL FORWARD CHARACTERISTICS

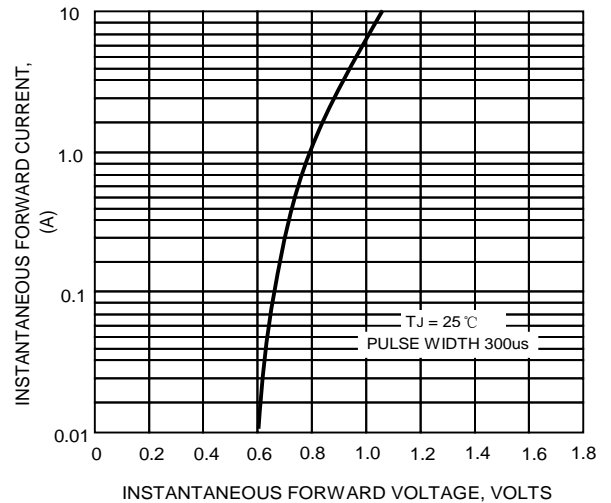


FIG.5-TYPICAL REVERSE CHARACTERISTICS

